



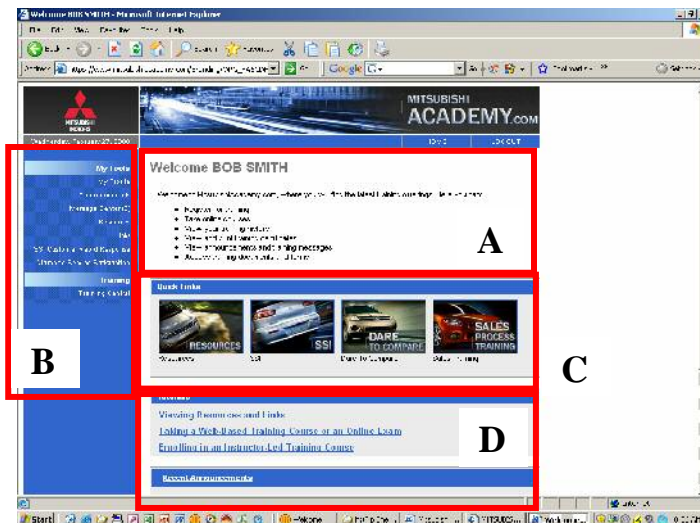
## MitsubishiAcademy.com Home Page

### THE HOME PAGE

Once you log onto MitsubishiAcademy.com, the Home Page will appear.

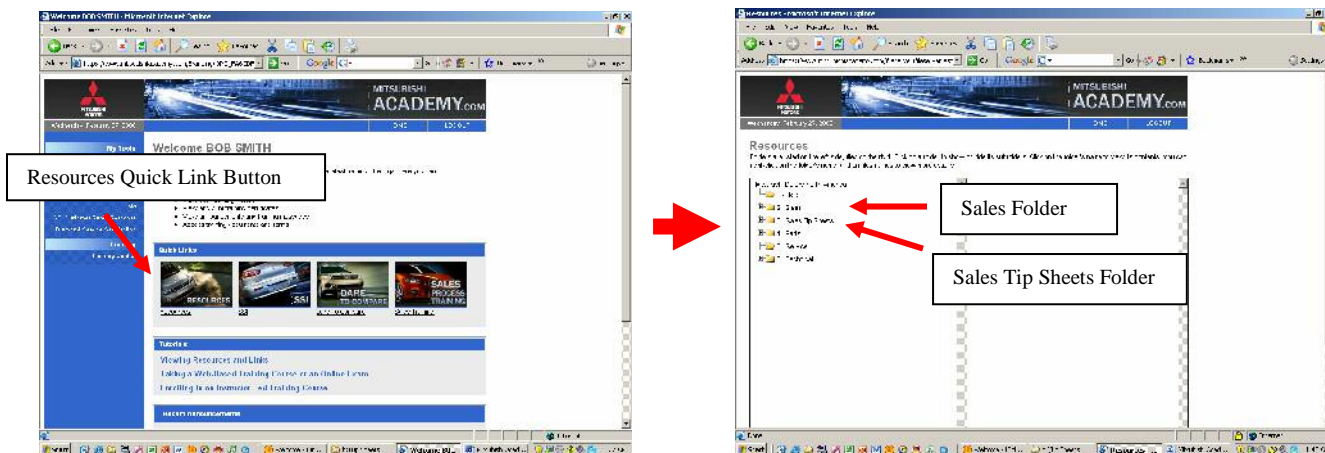
Here is your map to many training-related functions and resources.

- A. The site welcomes you and shows what you can do in MitsubishiAcademy.
- B. Look along the left side of the page to see your choices.
- C. These buttons are Quick Links to key information or courses.
- D. The bottom part of the page provides Tutorial Information, Recent Announcements, and Recent Messages.



### QUICK LINKS

Buttons are available for you to take a quick link to a specific topic.



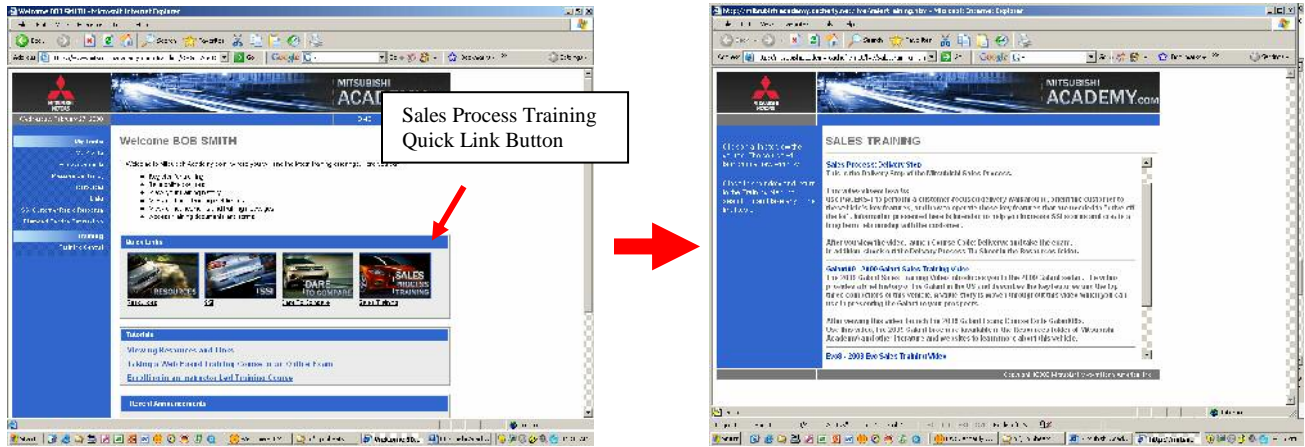
Click **Resources...** and folders are displayed.

The **Sales** folder contains reference materials related to product knowledge and the sales process. Here, you can find a Pocket Facts Guide (information about the Mitsubishi product line-up) or a Competitive Comparison Guide (where the advantages of Mitsubishi vehicle features are compared with the competition).

In the **Sales Tip Sheets** folder, you can find reference documents which explain a key sales process, information about a vehicle, or unique technology in the vehicle such as the NAVI System or SIRIUS® Satellite Radio.

The **SSI button** takes you to SSI related information. The **Dare-to-Compare button** contains competitive comparison information about the Mitsubishi model line-up.

Click the **Sales Process Training button** (below) and you will be linked to a list of Sales Training courses and exams. Simply click on the link to open the site, watch a video, or take an exam.



For further assistance, consult your Sales Manager or call the MitsubishiAcademy Hotline at 800.380.4313